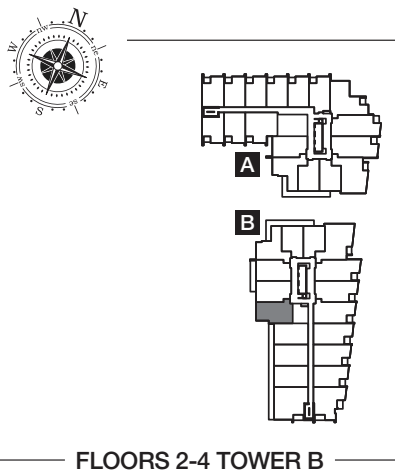
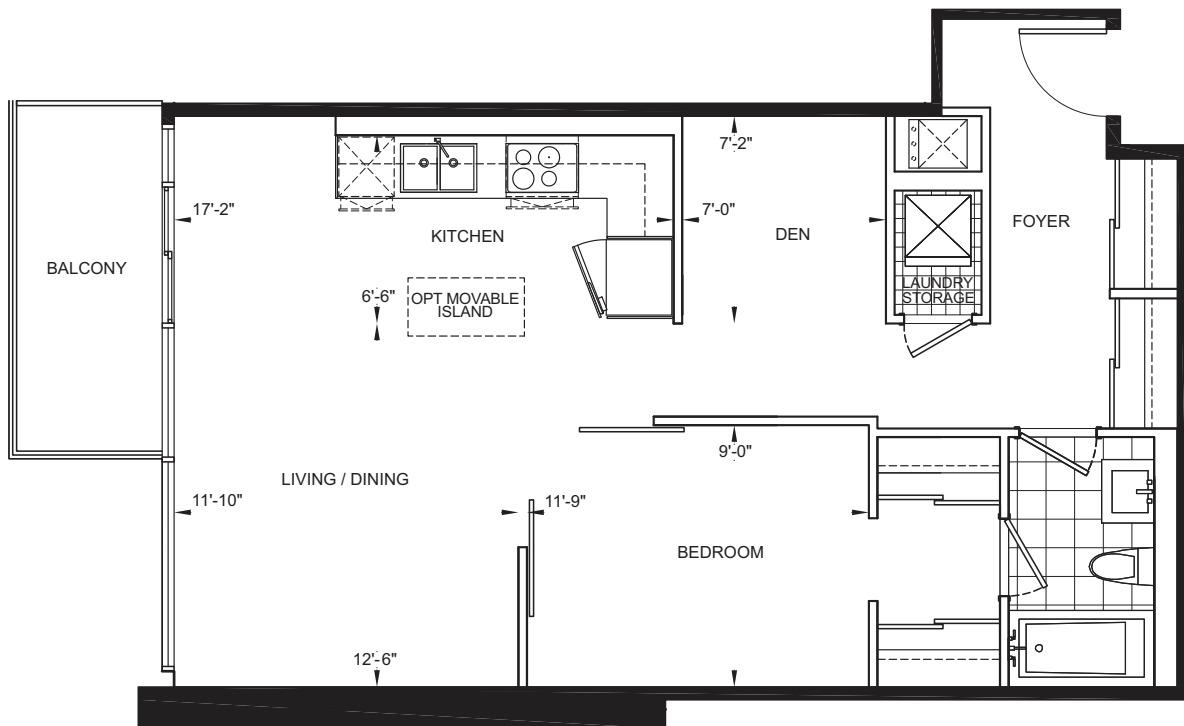


SUITE TYPE 52

761 SQ. FT. | ONE BEDROOM + DEN



FLOORS 2-4 TOWER B

Grand Palace
CONDOMINIUMS

39

9612 Yonge Street 905.907.4370 www.grandpalace.ca

DISCLAIMER: All prices, figures, sizes, specifications and information are subject to change without notice. All areas and stated dimensions are approximate. Actual usable floorspace, living area and square footage may vary from stated floor area. All illustrations are artist's concept only. The unit show may be the reverse of the unit purchased. E. & O.E April 2012.